

**The MSU-2000 has been used to determine:**

Mottle indices for solid print and white top liner

Degree of wicking and feathering in ink jet print samples

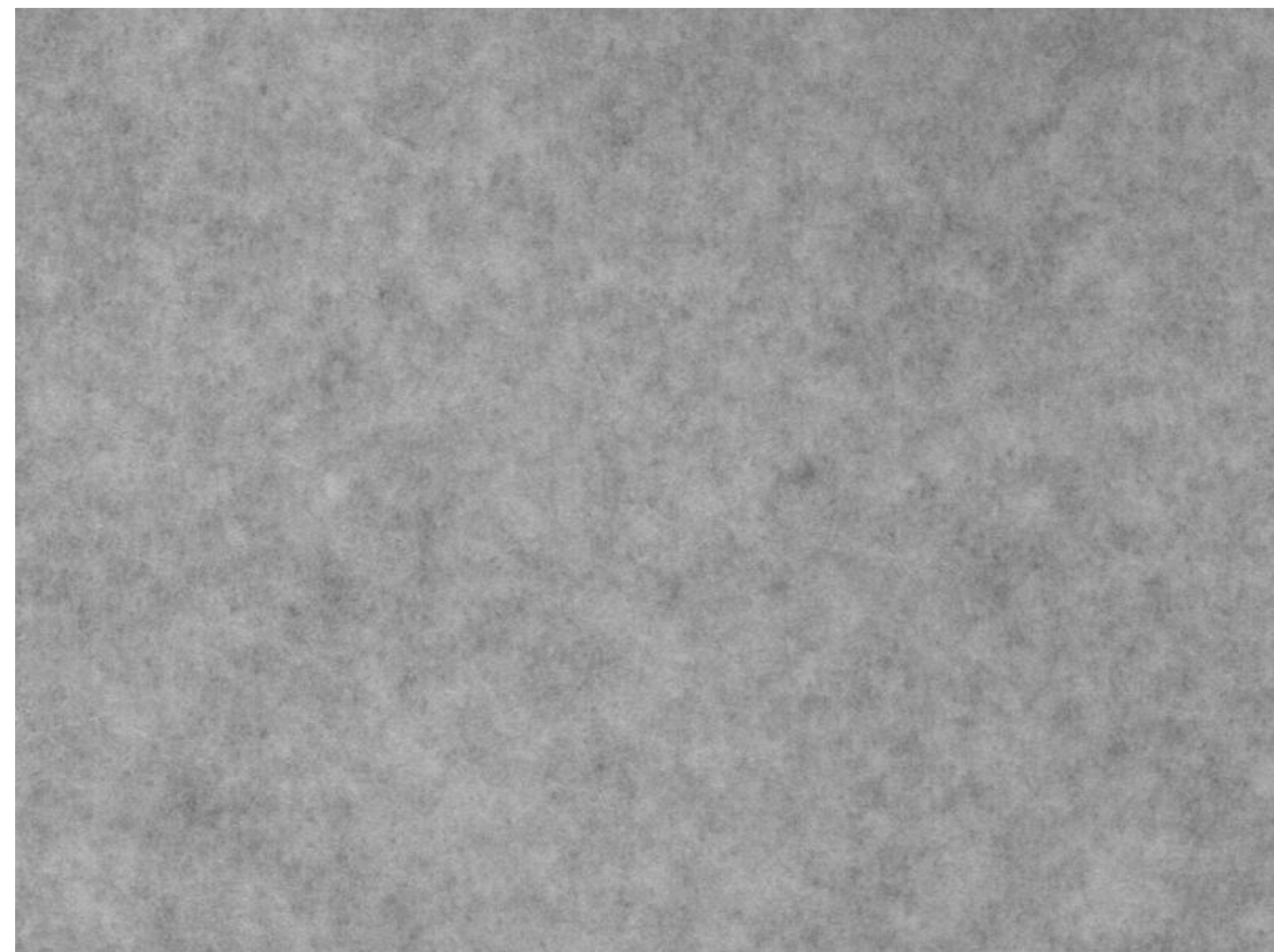
Appearance

Other unique image analysis tests for uniformity, print quality and quantifying contamination.

---

**MSU WHITE TOP MOTTLE EXAMPLES - LOWER NUMBER IS WORSE**

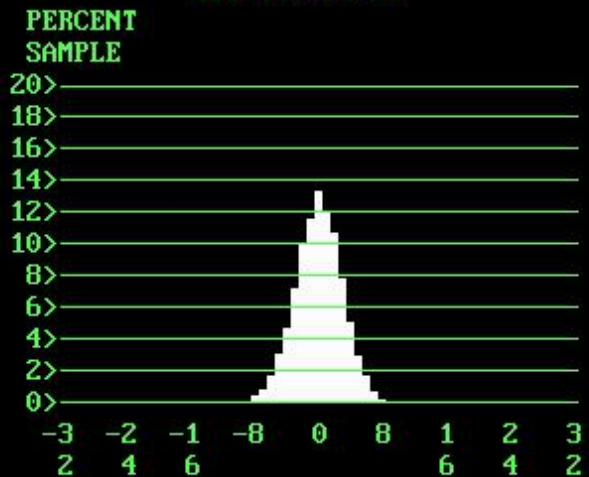
**HEAVY MOTTLE**



AREA SCANNED 3.99 X 2.99 in. AT 200 DPI

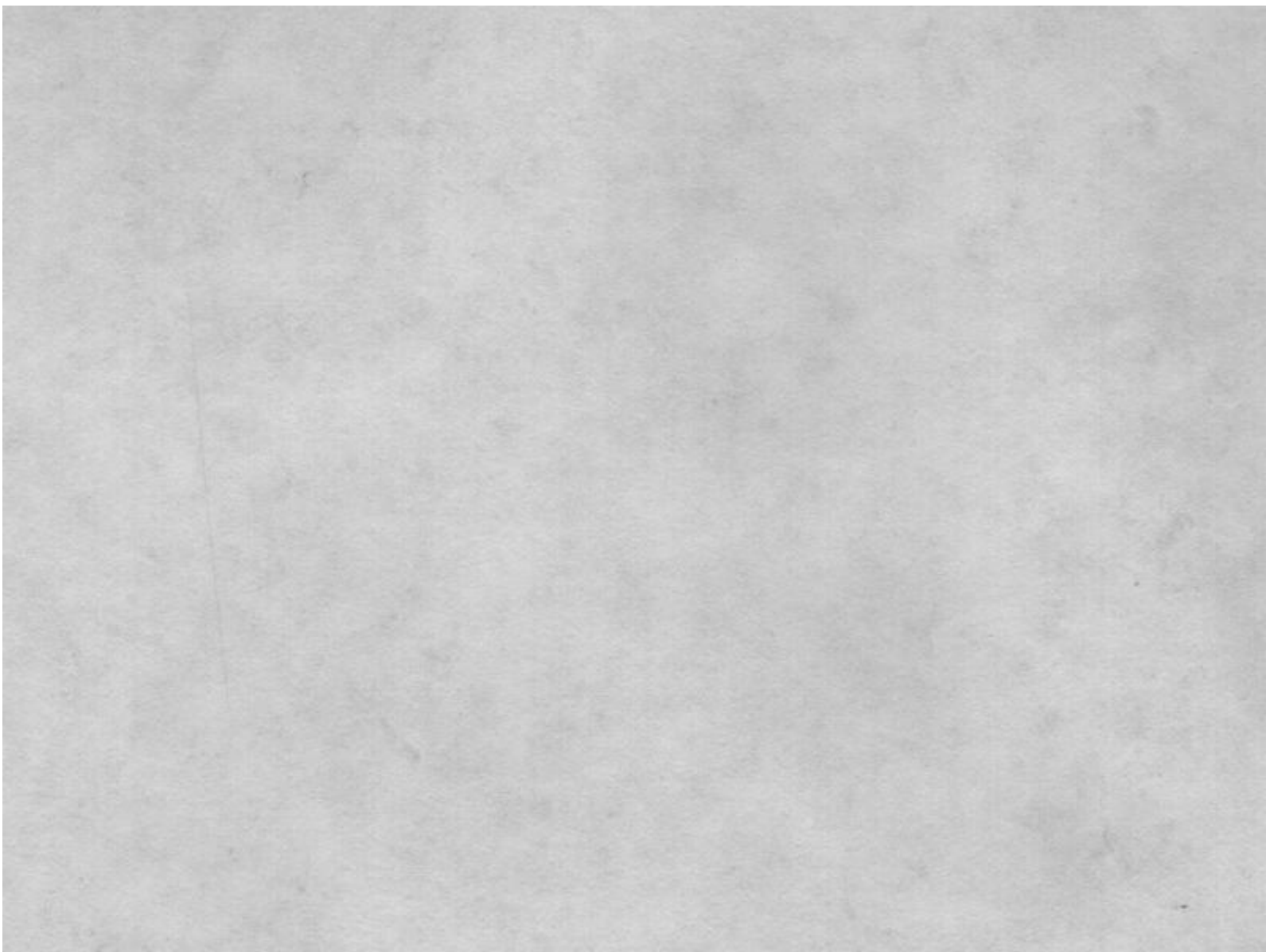
MICRO SURF. UNIF 209.34  
 1 STD DEVIATION 3.52  
 HISTOGRAM PEAK 3063  
 HISTOGRAM WIDTH 17.67  
 # OF COMPARISONS 22968  
 MEAN GRAY LEVEL 153.00

MSU HISTOGRAM



ENTER TO PRINT / ESC FOR MAIN MENU

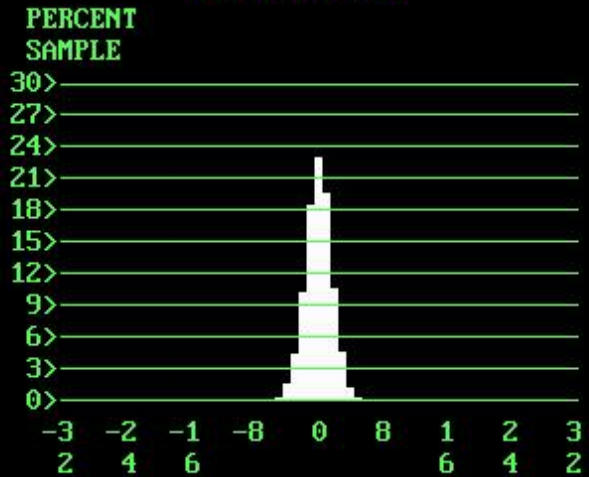
LIGHT MOTTLE



AREA SCANNED 3.99 X 2.99 in. AT 200 DPI

MICRO SURF. UNIF 561.35  
1 STD DEVIATION 2.56  
HISTOGRAM PEAK 5306  
HISTOGRAM WIDTH 10.94  
# OF COMPARISONS 22968  
MEAN GRAY LEVEL 182.00

## MSU HISTOGRAM



ENTER TO PRINT / ESC FOR MAIN MENU